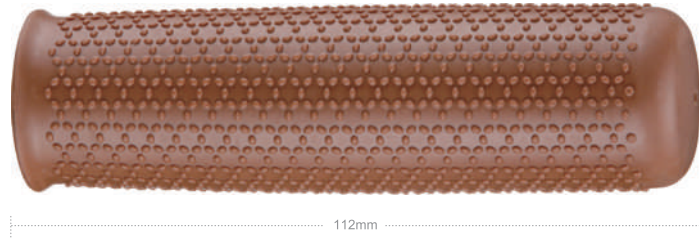


# SW-GC-113 Bicycle Grip

- Material: TPR
- Length: 112mm
- Design for ø22.2mm handlebar
- Anit Slip



# SW-GC-135 Bicycle Grip

- Material: TPR
- Length: 140mm
- Design for ø22.2mm handlebar



Shock-absorbent Design

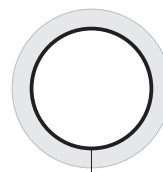


# SW-GC-117 Bicycle Grip

- Material: TPR / PP
- Horn-shape bar end for better safety.
- Length: 130mm
- Design for ø22.2mm handlebar



Shock-absorbent Design



PP inner tube

# SW-GC-151 Bicycle Grip

- Material: TPR
- Length: 102mm / 140mm
- Design for ø22.2mm handlebar

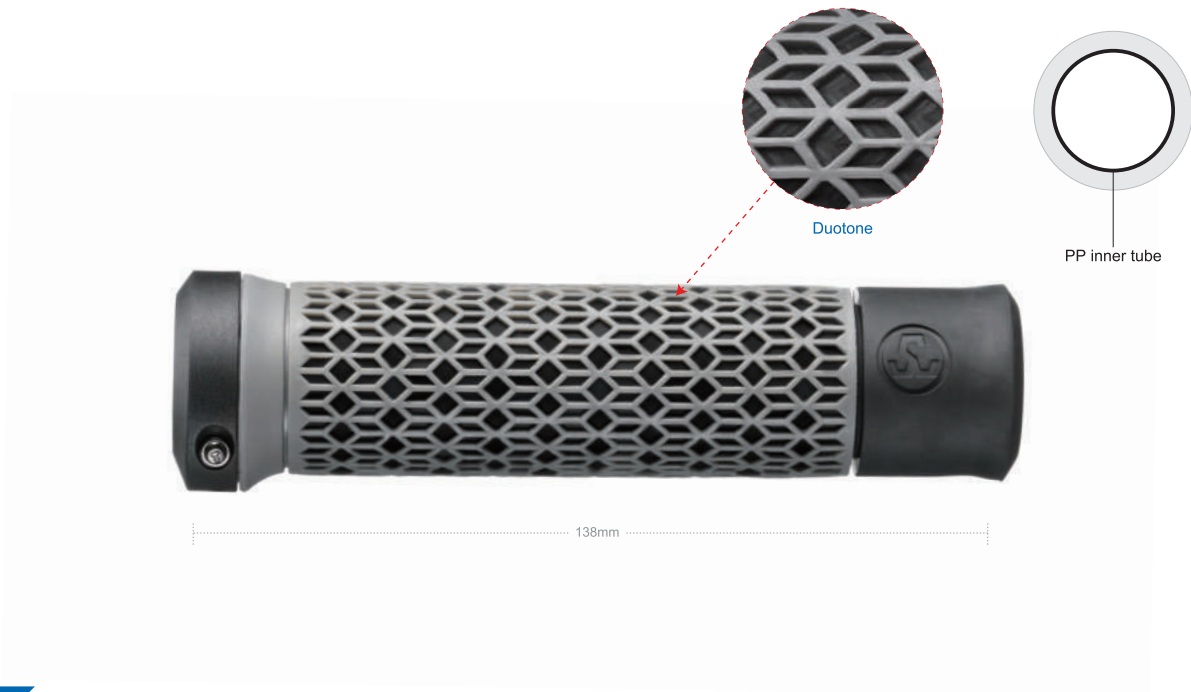


Shock-absorbent Design



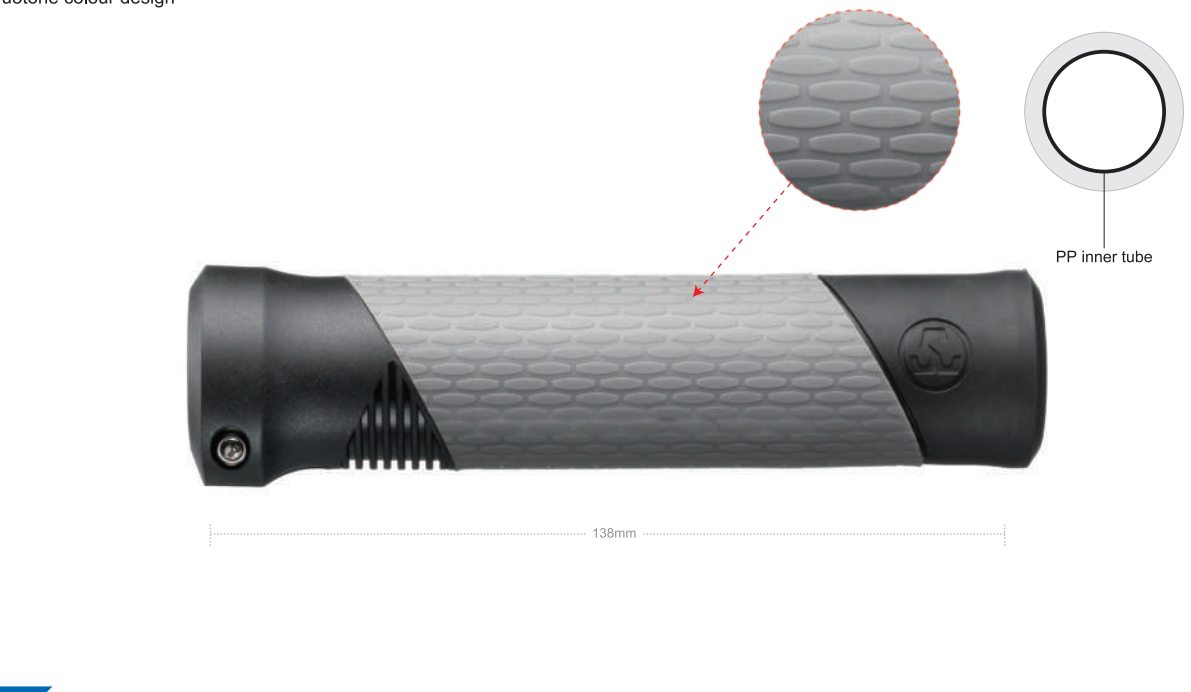
# SW-GC-171A Patented Bicycle Grip

- Material: TPR / PP
- Length: 138mm
- Design for ø22.2mm handlebar
- Duotone colour design



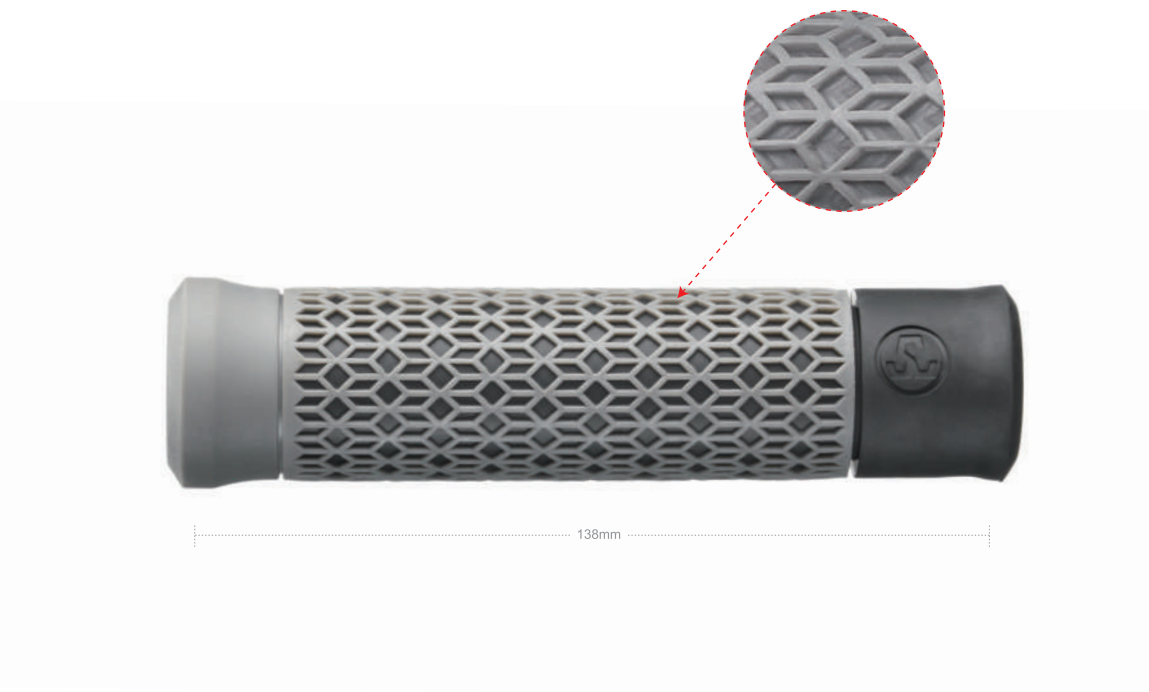
# SW-GC-159A Patented Bicycle Grip

- Material: TPR / PP
- A clean and modern look.
- Length: 138mm
- Design for ø22.2mm handlebar
- Duotone colour design



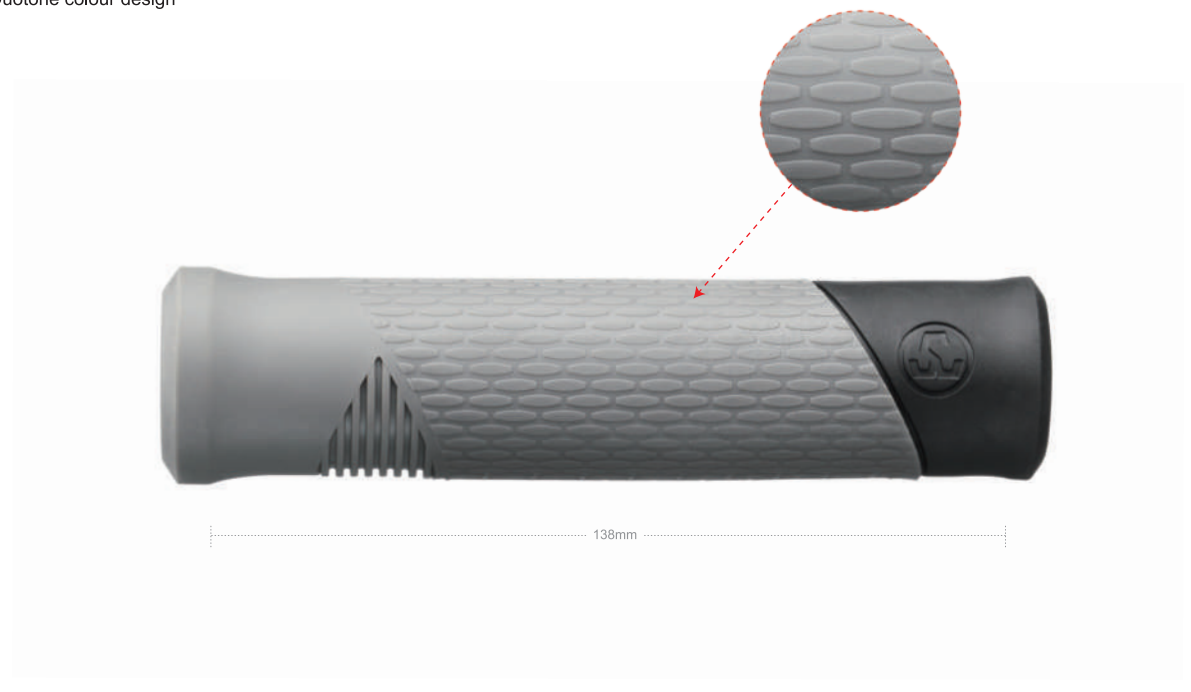
# SW-GC-171B Patented Bicycle Grip

- Material: TPR
- Length: 138mm
- Design for ø22.2mm handlebar
- Duotone colour design



# SW-GC-159B Patented Bicycle Grip

- Material: TPR
- A clean and modern look.
- Length: 138mm
- Design for ø22.2mm handlebar
- Duotone colour design



## SW-GC-177A/C Bicycle Grip

### SW-GC-177A

- Material: Silicone / Rubber
- Length: 132mm
- Design for ø22.2mm handlebar
- Light Weight
- Various colors are available.

### SW-GC-177C

- Material: Silicone / Rubber
- Length: 132mm
- Design for ø22.2mm handlebar
- Light Weight
- Various colors are available.



## FL-GC-137 Bicycle Grip

- Material: TPR / Aluminum Bar-end
- Length: 135mm
- Design for ø22.2mm handlebar
- Duotone colour design



## SW-GC-177B/D Bicycle Grip

### SW-GC-177B

- Material: Silicone / Rubber
- Length: 132mm / 100mm
- Design for ø22.2mm handlebar

### SW-GC-177D

- Material: Silicone
- Length: 132mm / 100mm
- Design for ø22.2mm handlebar



## FL-GC-139 Bicycle Grip

- Material: TPR / PP
- A clean and modern look.
- Length: 138mm
- Design for ø22.2mm handlebar
- Duotone colour design

