

SW-414 Cable Guide Flange

• Material: PA6



SW-414A
Clip guide for 2-way cable
Fit $\phi 5\text{mm}$ cable.



SW-414B
Clip guide for 1-way cable
Fit $\phi 5\text{mm}$ cable.



SW-414C
Clip guide for 2-way cable
with security cap
Fit $\phi 5\text{mm}$ cable.



SW-414D
Clip guide for 1-way cable
with security cap
Fit $\phi 5\text{mm}$ cable.



SW-414E
1 or 2-way cable joint
Fit $\phi 5\text{mm}$ cable.



SW-414F
Clip guide for 2-way cable
with security cap
Fit $\phi 5\text{mm}$ cable.



SW-414F1-1
Clip guide for 2-way cable
with single rib
Fit $\phi 4 / \phi 5\text{mm}$ cable.



SW-414F2
Clip guide for 2-way cable
with double rib
Fit $\phi 4\text{mm}$ cable.



SW-414G
Clip guide for 1-way cable
with security cap
Fit $\phi 5\text{mm}$ cable.



SW-414I
Clip guide for 2-way cable
Fit $\phi 5\text{mm}$ cable.



SW-414H
Seattube clamp with
cable-guard

SW-415 On-frame Cable Guide



SW-415
• Material: TPR
• Fit $\phi 4.3\text{mm}$ cable.
• Frame tube: t 2mm

SW-415A On-frame Cover



SW-415A
• Material: TPR
• Frame tube: t 2mm

SW-416 On-frame Cable Guide



SW-416
• Material: TPR
• Fit $\phi 4.3 / \phi 6\text{mm}$ cable.
• Frame tube: t 2.9mm

SW-417 On-frame Cable Guide



SW-417
• Material: TPR + PP
• Fit $\phi 4.3\text{mm}$ cable.
• Frame tube: t 2mm

SW-412(A/B) Handlebar Price / Information card Holder

• Material: PP
• Fix on handlebar to hold price card.



SW-412



SW-412A(B)



SW-412
Regular Price-card Holder
(fit $\phi 7/8"$ handlebar)



SW-412A
Wider Price-card Holder
(fit $\phi 7/8"$ handlebar)



SW-412B
Wider Price-card Holder
(fit $\phi 3/4"$ handlebar)

HUB CAP Hub & Seat Clamp Cap

• Material: PP



HUB CAP E
• Fit 3/8" hub nuts.
• Size: 15mm.



HUB CAP F
• Fit 5/16" hub nuts.
• Size: 14mm.



SEAT CLAMP CAP G
• Fit M8 nuts.
• Size: 13mm.

SW-RH1 Reflector Connector

- Vertical angle adjustable.
- Fit all Sunny Wheel reflector brackets on fork & seat stay bridge.



Fit reflector with screw or nut fixing.



Fit Cateye / Sate-lite reflector with slide-in fixing.



SW-RH3 Reflector Connector

- Vertical angle adjustable.
- Fit all Sunny Wheel reflector brackets on handlebar.



Fit reflector with screw or nut fixing.



Fit Cateye / Sate-lite reflector with slide-in fixing.



SW-608C

Wall-mount Bicycle Hanger

- Material: Steel / TPR
- 608C: for MTB / Tire width within 2.5".



SW-608C



SW-608C

SW-608D

Wall-mount Bicycle Hanger

- Material: Steel / TPR
- 608D: for Roadbike / Tire width within 35C.



SW-608D



SW-608D

SW-608F

Wall-mount Bicycle Hanger

- Material: Steel / TPR
- 608F: for E-BIKE / Tire width within 3".



SW-608F

REFLECTOR HOLDER

- Material: PA66 + 33%GF
- Angle adjustable.



SW-508 Series

REFLECTOR POST CLAMPS



SW-508A

FIT TO VARIES SIZES OF SEAT STAY TUBES

- 15mm screw to fit ϕ 14.2-15mm tube
- 18mm screw to fit ϕ 15-15.6mm tube
- 20mm screw to fit ϕ 15.8-16.2mm tube



SW-508B

FIT TO VARIES SIZES OF SEAT STAY TUBES

- 15mm screw to fit ϕ 18-19.4mm tube
- 18mm screw to fit ϕ 19.2-20mm tube
- 20mm screw to fit ϕ 19.8-20.4mm tube



SW-508C

FIT TO VARIES SIZES OF SEAT POST & HEAD TUBES

- 15mm screw to fit ϕ 20.4-22.6mm tube
- 18mm screw to fit ϕ 22.6-23.2mm tube
- 20mm screw to fit ϕ 23.2-23.8mm tube



SW-508D

FIT TO VARIES SIZES OF SEAT POST & HEAD TUBES

- 15mm screw to fit ϕ 25.2-26.4mm tube
- 18mm screw to fit ϕ 26.4-27mm tube
- 20mm screw to fit ϕ 27-27.6mm tube



SW-508E

FIT TO VARIES SIZES OF SEAT POST & HEAD TUBES

- 15mm screw to fit ϕ 27.2-28.6mm tube
- 18mm screw to fit ϕ 28.4-29.2mm tube
- 20mm screw to fit ϕ 29-30mm tube



SW-508F

FIT TO VARIES SIZES OF SEAT POST & HEAD TUBES

- 15mm screw to fit ϕ 30.2-31.6mm tube
- 18mm screw to fit ϕ 31.4-32.2mm tube
- 20mm screw to fit ϕ 32-33mm tube



SW-508G

FIT TO VARIES SIZES OF SEAT POST & HEAD TUBES

- 15mm screw to fit ϕ 20.4-21.4mm tube
- 18mm screw to fit ϕ 21.2-21.8mm tube
- 20mm screw to fit ϕ 21.8-22.6mm tube



SW-508H

FIT TO VARIES SIZES OF SEAT POST & HEAD TUBES

- 15mm screw to fit ϕ 24.0-25.2mm tube
- 18mm screw to fit ϕ 25.2-25.8mm tube
- 20mm screw to fit ϕ 25.8-26.6mm tube

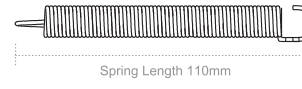
SW-PT01 Front-wheel Alignment Gear

- Material: PA6 / POM / PP / ED Steel
- Fit $\varnothing 28.6\sim 32\text{mm}$ downtube to align front wheel straight.



SW-PT01-62 Front-wheel Alignment Gear

- Material: PA6 / POM / PP / ED Steel
- Adjustable strap to fit $\varnothing 38\sim 62\text{mm}$ downtube to align front wheel straight.



SW-PT02 Front-wheel Alignment Gear

- Material: PP / SUS304
- Fit on built-in bracket of downtube to align front wheel straight.



SW-AQ-111 Chain Jam Protector

- Material: Nylon
- Keeps the chain on the chain rings and prevents chain jam in case of an over-shift.
- For seat-tube $\varnothing 28.6 / \varnothing 31.8 / \varnothing 34.9\text{mm}$.



Prevents Chain Jam



AQ-111A1
 $\varnothing 28.6\text{mm}$

AQ-111B1
 $\varnothing 31.8\text{mm}$

AQ-111C1
 $\varnothing 34.9\text{mm}$

SW-BN Valve Caps

Material: Brass



SW-BNA
Tube valve EV to AV



SW-BNB
Tube valve FV to EV



SW-BNC
Tube valve AV to hand-pump EV



SW-BND
Tube valve FV to AV



SW-BNE
Tube valve AV to EV



SW-BNF
Tube valve AV to EV



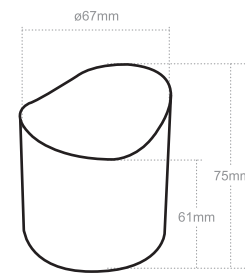
SW-BNI
Tube valve EV 90° elbow

SW-AC-513 Can Holder

- Material: PP
- Fit $\phi 19\sim\phi 22.2$ mm handlebar



Fit Most Regular Cans

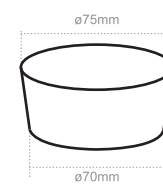


SW-AC-511A Aluminum Cup Holder

- Material: Aluminum
- Customizable colors.
- Fit $\phi 22.2\sim\phi 35$ mm handlebar
- L 130 x H 40 mm / Weight: 80g.



Fit Most Regular Cups



- Silver
- Dark Gray
- Black
- Gold
- Brown
- Orange
- Red
- Purple
- Blue
- Green

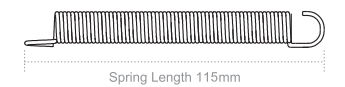
SW-PT03 Front-wheel Alignment Gear

- Material: PP / SUS304
- Fit on built-in bracket of downtube to align front wheel straight.



SW-PT03-B Front-wheel Alignment Gear

- Material: PP / SUS304
- Fit on built-in bracket of downtube to align front wheel straight.

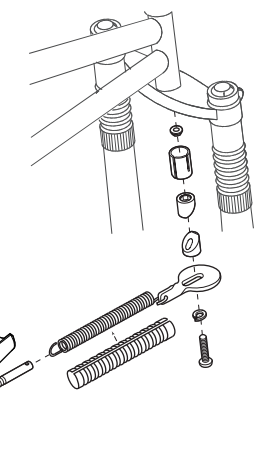
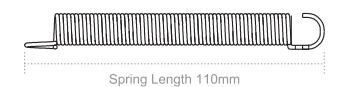


SW-PT05 Front-wheel Alignment Gear

- Material: PA6 / POM / PP / ED Steel
- Adjustable strap to fit $\phi 38\sim\phi 62$ mm downtube to align front wheel straight.
- Exclusively designed for front-suspension bikes.



SB1 Connector
Fit $\phi 18.5\sim\phi 25.4$ mm Inner Head-tube.



SW-BH-115 Bottle Cage Patented

- Material: PA6
- Fit ϕ 74~76mm bottle.
- For Right-handed & Left-handed.



Customized Logo Available



Customized Shape Available



SW-MH-111 Phone Holder Patented

- Material: TPE / PA6
- Fit length 145~190mm smart phone.
- For ϕ 22.2~ ϕ 31.8 handlebar.
- Easy assembly tool free.



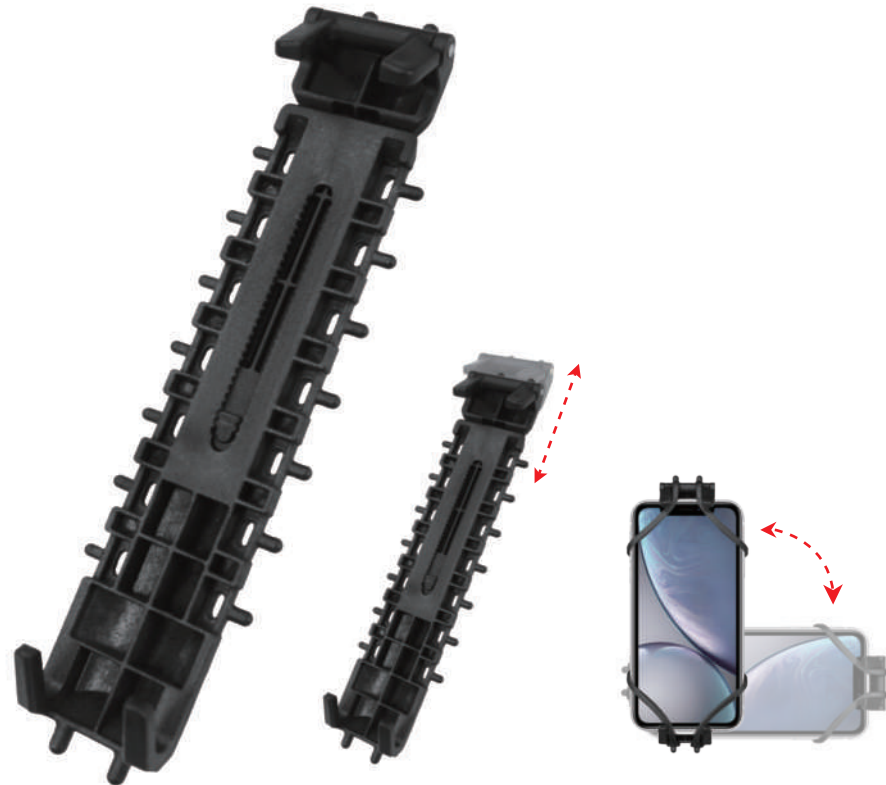
Fit various size



Straight or horizontal



High stability



SW-BH-113L Bottle Cage Patented

- Material: PC / ABS / Aluminum
- Fit ϕ 72~ ϕ 80mm PET bottle
- For ϕ 72.5 ~ ϕ 81mm Stainless Water Bottle (27oz Classic and insulated bottle)



Adjustable length and width



Length Adjustable



Stainless Water Bottle (27oz)



SW-BH-113 Bottle Cage Patented

- Material: PC / ABS / Aluminum
- Fit ϕ 72~ ϕ 80mm PET bottle
- For ϕ 72.5 ~ ϕ 81mm Stainless Water Bottle (18oz Classic and insulated bottle)



Length Adjustable



PET Water Bottle



Stainless Water Bottle (18oz)



SW-KS-111 Portable Bicycle Side Stand Patented

- Bicycle wheel size only for 26"~29" include (700C)
- Length adjustable
- Soft edge design preventing scratch on the chainstay
- L 240 x W40 x H25mm / Weight: 128.5g



